

## *... to a World of Planned Giving Opportunities*

- ❖ Opportunity to Grow Professionally
- ❖ Opportunity to Expand Your Practice
- ❖ Opportunity to Help Your Donors/Clients

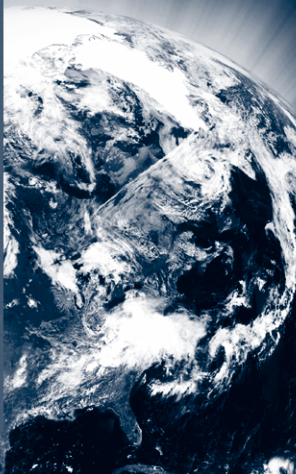
These opportunities will benefit you, your donors and your organization. Join the Suburban Chicago Planned Giving Council and you'll receive . . .

- ❖ New Ideas
- ❖ New Tools
- ❖ New Legislative Updates
- ❖ New Associates
- ❖ New Results

Open this door for more information . . .

SCPGC

P.O. Box 804 ❖ LaGrange, IL 60525  
(708) 459-8628 ❖ [www.scpgc.org](http://www.scpgc.org)



### **Our Mission**

To be the leader in providing timely resources and quality education for planned giving professionals in the Chicago suburbs.

### **Our Values**

- ❖ Donor Centered Planning
- ❖ Ethical Practices
- ❖ Professional Growth
- ❖ Sound Financial Principles

**For more information, contact:**

SCPGC

P.O. Box 804  
LaGrange, IL 60525  
(708) 459-8628  
[www.scpgc.org](http://www.scpgc.org)

# **Suburban Chicago**

## **Planned Giving Council**

**Planned Giving Resources  
at Your Doorstep**

*Unlock the door . . .*



The Suburban Chicago Planned Giving Council is a professional association of development officers and allied professionals in the Chicago suburbs who share an interest in promoting charitable gift planning in our community.

**Our meetings** focus on providing you, the charitable gift planning professional, with outstanding speakers on timely gift planning topics and providing opportunity to build a larger professional network of allied planning professionals. All of this provided to you right at your doorstep, at a convenient time and location.

Our Council will provide you with an **exceptional value**, and an outstanding return on your investment of time and resources.

We welcome you as you walk through the door and expand your planned giving world. **Please join** us by sending in the attached membership application and becoming a member of SCPGC!

## People You'll Meet

- ❖ Planned Giving Officers
- ❖ Fund Raising Professionals
  - ❖ Trust Officers
  - ❖ Legal Advisors
  - ❖ Tax Advisors
- ❖ Financial Advisors
- ❖ Non-profit Executives
  - ❖ Attorneys

## Program Benefits

- ❖ Nationally Recognized Speakers
  - ❖ New Ideas on Timely Topics
  - ❖ Networking Opportunities
- ❖ Professional Skill Enhancement
- ❖ Convenient Time and Location  
**7:30 – 9:00 a.m.** breakfast meeting
- ❖ Continuing Education Credits
- ❖ Discounts on Special Programs
  - ❖ Discounts on Partnership for Philanthropic Planning
- Membership and their Member Benefits
- ❖ Sponsorship Opportunities Available

## Fees

- ❖ Membership Fee: \$ 85 – **not for profits**  
\$125 – **for profits**  
*(Discount of \$25 for each additional member of the same organization)*
- ❖ Discounted Meeting Fee for Members:  
\$25 (\$45 for non-members)

## \*MEMBERSHIP APPLICATION / INVOICE\*

Please print the following information clearly:

Full Name \_\_\_\_\_

Title \_\_\_\_\_

Organization \_\_\_\_\_

Address \_\_\_\_\_

City \_\_\_\_\_

State \_\_\_\_\_ Zip Code \_\_\_\_\_

Work Telephone \_\_\_\_\_

E-mail \_\_\_\_\_

Fax \_\_\_\_\_

Please include form with your payment to:

SCPGC, P.O. Box 804,  
LaGrange, IL 60525

Fax: (708) 401-0360

**Please make check payable to:**

Suburban Chicago Planned Giving Council  
(FEIN: 36-4117045)

(Credit card payment available online.)

**For more information,  
visit [www.scpgc.org](http://www.scpgc.org)**

Membership is held on an individual basis and is not transferable regardless of whether paid by the individual or their employer. Membership is held on a calendar year basis.

